

State of Wyoming Corner Record

(In compliance with the CORNER PERPETUATION AND FILING ACT, Wyoming Statutes, 1997 Section 33-29-146 et. seq., and the Rules and Regulations of the Board of Professional Engineers and Professional Land Surveyors)

Reverse side of this form may be used if more space is needed.

Record of original survey and citation of source of historical information (if corner is lost or obliterated). Description of corner monumentation evidence found and/or monument and accessories established to perpetuate the location of this corner. Sketch of relative location of monument, accessories, and reference points with course and distance to adjacent corner(s) (if determined in this survey). Method and rationale for re-establishment of lost or obliterated corner.

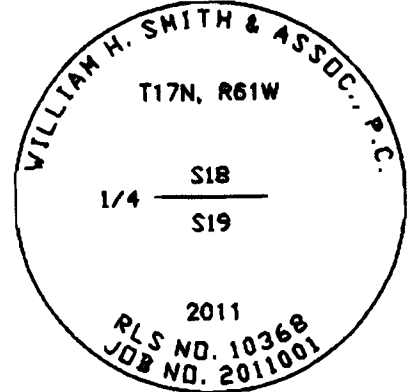
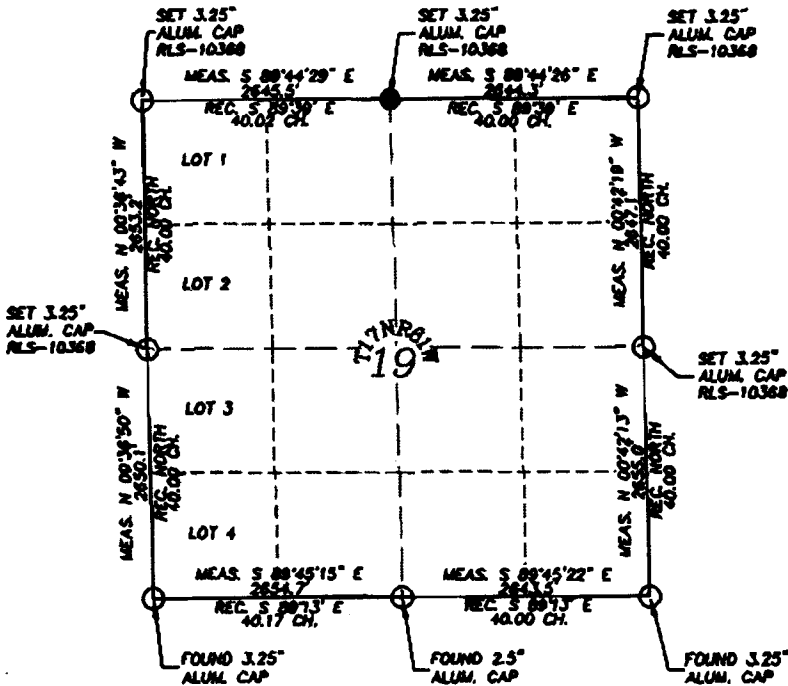
RECORD: Set a limestone 16"x16"x4" 10" deep marked $\frac{1}{2}$ on North side for $\frac{1}{2}$ sec. cor.

FOUND: NOTHING

SET: 3 1/4" aluminum cap on number 6 rebar, marked " $\frac{1}{4}$ T17N R61W S 18/S 19 2011 RLS 10368" 5" below surface.

Monument location

T 17 N R 61 W



Monument Inscription

Legend:

- File corner/found
- Controlling corner

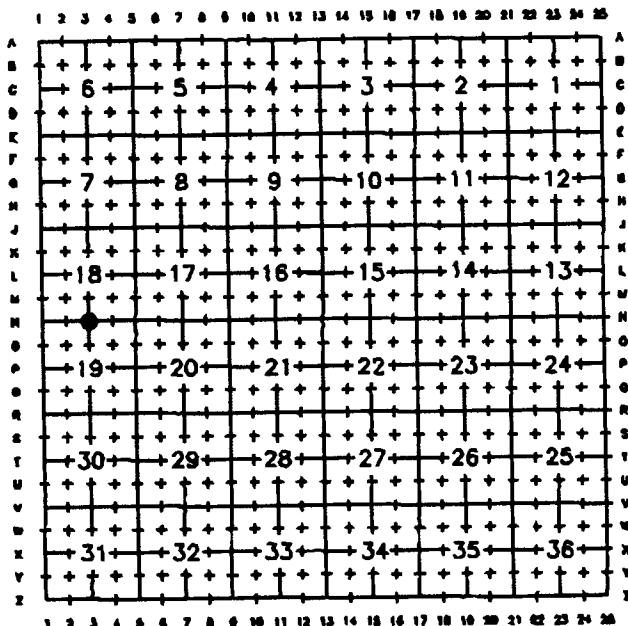
Note: Datum based on Wyoming State Plane Coordinate System East Zone NAD 83.

Date of Field Work: 05/07/2011

Office Reference: 2011001

Prepared by: RAW

Cross Index Plat

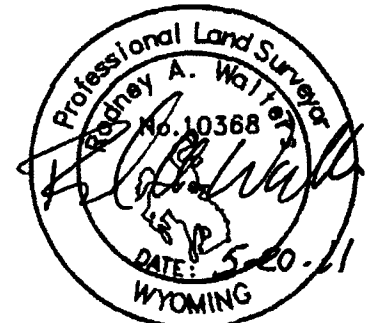


Firm/Agency, Address

WILLIAM H. SMITH & ASSOC.
P.O. BOX 620
GREEN RIVER, WY 82935
Phone Number: (307) 875-3638

This corner record was prepared by me or under my direction and supervision.

For Official Use Only



SEAL & SIGNATURE

Corner Name N 1/4 Corner Section 19, T 17 N, R 61 W, 6th P.M.

County: Laramie Wyoming

Cross-Index No.: N-3

SDPEPLS/PLSW; March 1994; PLW January 1990